

STATE OF NORTH CAROLINA  
DEPARTMENT OF TRANSPORTATION  
HIGHWAY DIVISION 6

# PLANS

**Let Date: February 7, 2024**

**CONTRACT ID: DF00466**

**TIP NO.: -----**

**FEDERAL AID NO.: STATE FUNDED**

**WBS ELEMENT NO.: 2024CPT.06.12.20242.1 & 2024CPT.06.12.20242.2**

**ROUTE NO.: VARIOUS**

**LOCATION: VARIOUS**

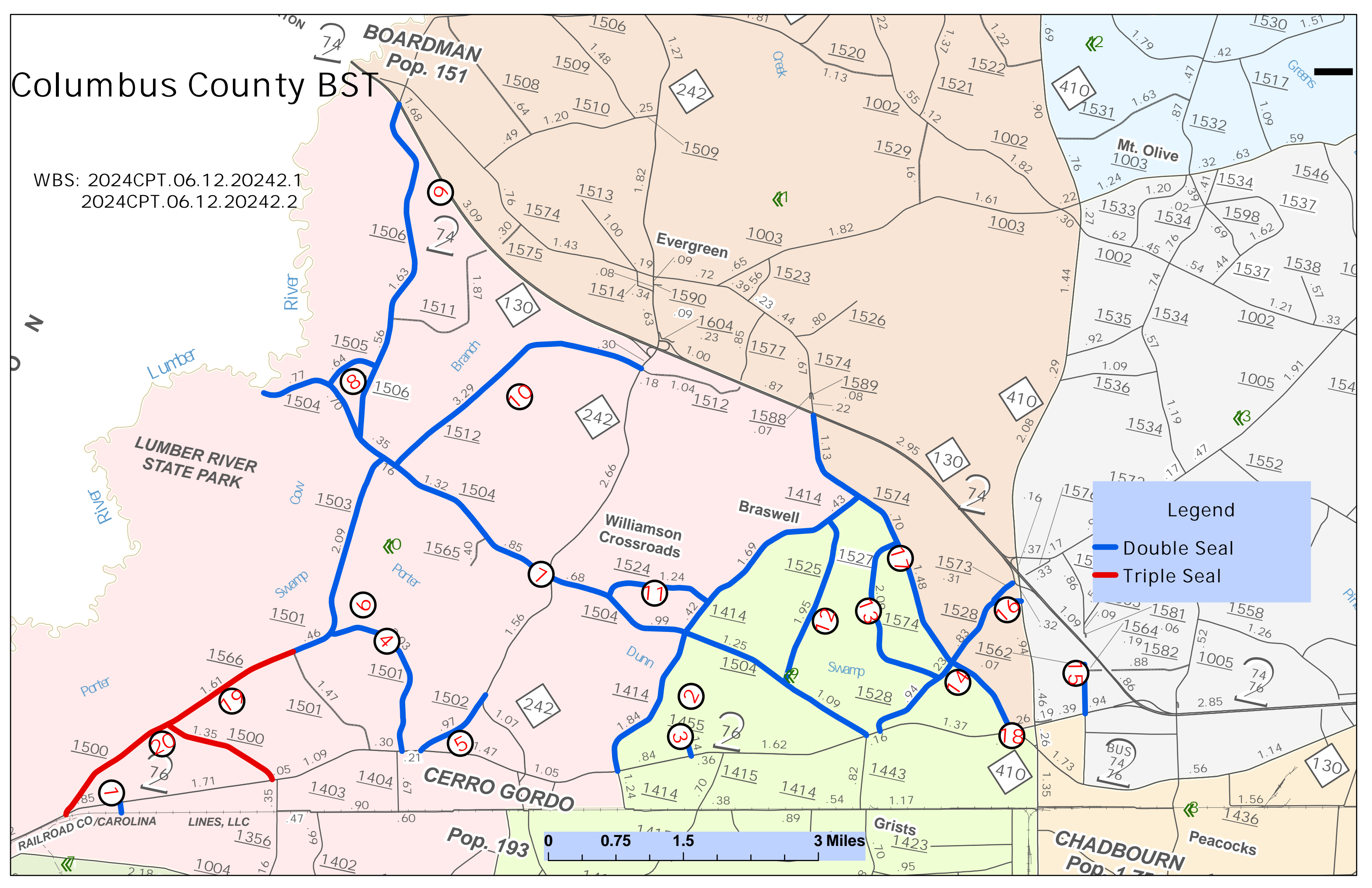
**COUNTY: COLUMBUS**

**TYPE OF WORK: ASPHALT SURFACE TREATMENT – DOUBLE & TRIPLE SEALS**

**LENGTH OF PROJECT: 43.59 MILES**

# Columbus County BST

WBS: 2024CPT.06.12.20242.1  
2024CPT.06.12.20242.2



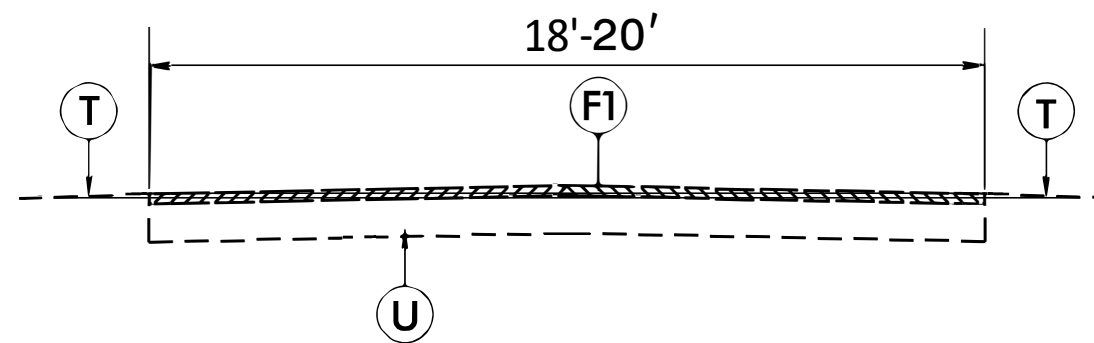
**Legend**

- Double Seal
- Triple Seal

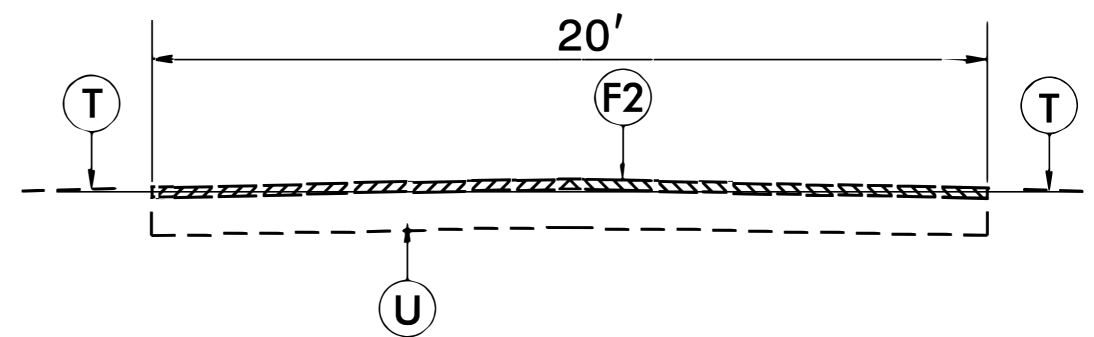
0 0.75 1.5 3 Miles

# PAVEMENT SCHEDULE

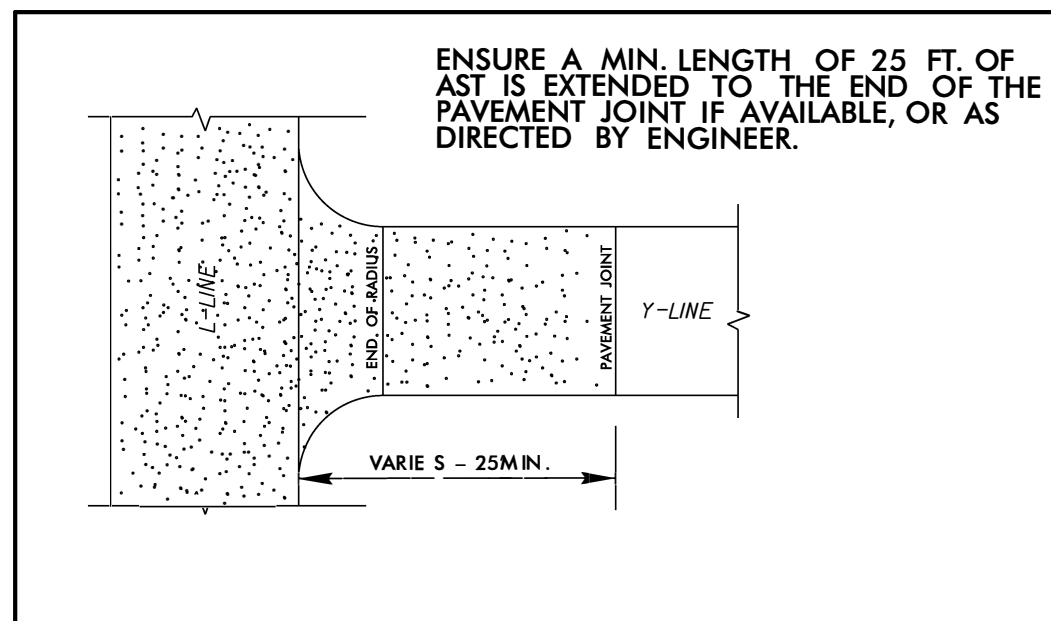
F1	DOUBLE SEAL PLACED ACCORDING TO THE SPECIAL PROVISION
F2	TRIPLE SEAL PLACED ACCORDING TO THE SPECIAL PROVISION
T	EXISTING SHOULDER
U	EXISTING ASPHALT PAVEMENT



TYPICAL SECTION NO. 1



TYPICAL SECTION NO. 2



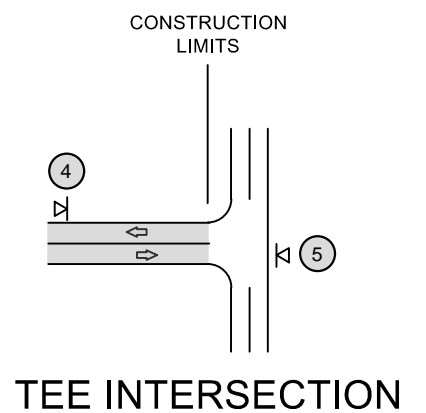
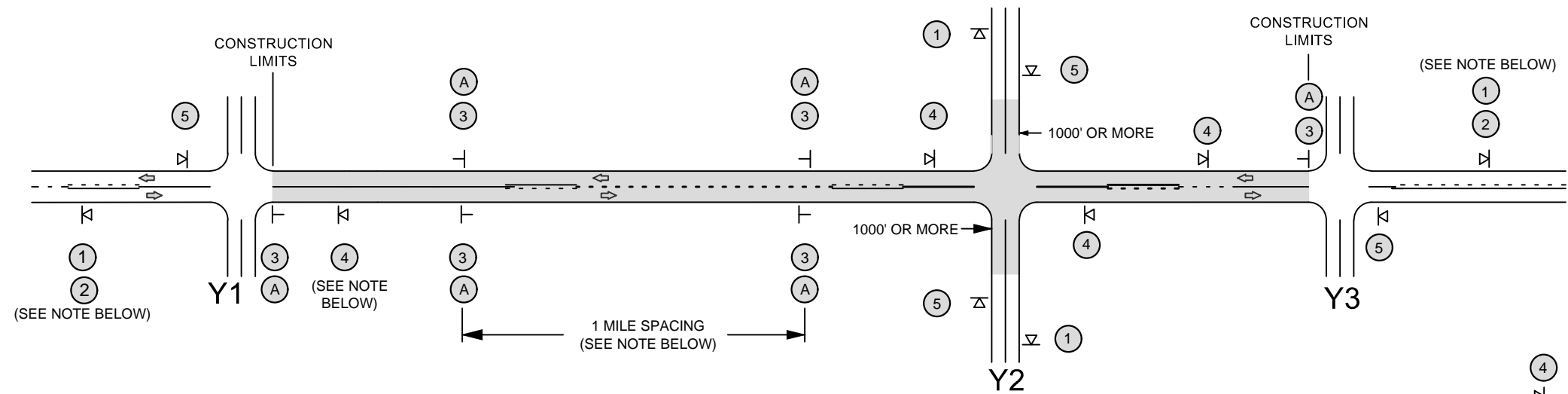
DETAIL 1

-Y- LINE INTERSECTION TREATMENT

21 SEP -2023 07:54  
 S:\ASST\ASST\Road 01\2023\AST\DF00453.2024CPT.06.05.20092.1.AST\_Bladen\Plans\typ.dgn  
 6/2/99

# SIGNING FOR ASPHALT SURFACE TREATMENT

LEGEND	
	PORTABLE SIGN
	STATIONARY SIGN
	DIRECTION OF TRAFFIC FLOW



## MAINLINE (-L-) SIGNING

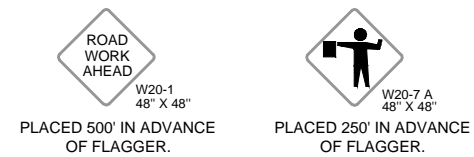
## -Y- LINE SIGNING

SIGNING NOTES AND PLACEMENT PER DIRECTION	<p>① </p> <p>② </p>	<p>- PLACE 1000' PRIOR TO BEGINNING OF CONSTRUCTION LIMITS. ONLY USED ON -Y- LINES IF RESURFACING LIMITS EXTEND 1000' ALONG -Y- LINE.</p> <p>- SIGN #2 ONLY USED WHEN RESURFACING LIMITS ARE 2 OR MORE MILES IN LENGTH. ROUND UP TO THE NEAREST WHOLE NUMBER. DO NOT USE FRACTIONAL OR DECIMAL NUMBERS.</p>
	<p>③ </p> <p></p>	<p>- ALTERNATE THE FOLLOWING TWO SIGNS:</p> <p>- STARTING WITH "LOOSE GRAVEL" (W8-7) FOLLOWED BY "UNMARKED PAVEMENT".</p> <p>- PLACE INITIALLY AT THE CONSTRUCTION LIMITS AND SPACED 1 MILE APART THEREAFTER.</p> <p>- AT TEE INTERSECTIONS INSTALL INITIALLY 0.5 MILE FROM INTERSECTION AND SPACE 1 MILE APART THEREAFTER.</p>
	<p>A </p>	<p>PLACE INITIALLY AT THE CONSTRUCTION LIMITS AND SPACED 1 MILE APART THEREAFTER. IF NO -Y- LINES EXIST, PLACE 2ND SET 1/2 MILE FROM THE CONSTRUCTION LIMITS AND THEN SPACE 1 MILE THEREAFTER. SPEED LIMIT SIGN MAY BE PLACED ON SAME POST AS LOOSE GRAVEL SIGN, IF DESIRED.</p>
	<p>④ </p>	<p>- THESE ARE FOR -Y- LINES THAT ARE "THROUGH" ROADWAYS. DEAD END AND SUBDIVISION ROADS ARE NOT "THROUGH" ROADWAYS.</p> <p>- INSTALL 500' +/- FROM EACH -Y- LINE APPROACH AS SHOWN ABOVE.</p> <p>- FOR MULTIPLE -Y- LINES THAT ARE SEPARATED BY 0.25 MILES OR LESS, TREAT AS A SINGLE UNIT AND INSTALL WITHIN 500' OF EACH APPROACH.</p> <p>- A MAXIMUM OF 2 SIGN SETS PER MILE. DO NOT INSTALL WHEN -Y- LINES ARE WITHIN 0.5 MILES FROM "END ROAD WORK" SIGN.</p>
	<p>⑤ </p>	<p>PLACE 500' FOLLOWING THE END OF CONSTRUCTION LIMITS OR AS SHOWN WHEN WORK ENDS AT A 3-WAY TEE INTERSECTION.</p>
<p>THE ABOVE SIGNS ARE ALL THAT ARE REQUIRED FOR A CONTRACTOR TO BEGIN A RESURFACING CONTRACT. ANY ADDITIONAL SIGNS REQUESTED BY NCDOT DIVISIONS SHALL BE INSTALLED WITHIN 7 BUSINESS DAYS OF THE START OF CONTRACT WORK.</p>		
<p><b>MAPS LESS THAN 2 MILES</b></p>	<p>FOR AST RESURFACING MAPS WITH CONSTRUCTION LIMITS LESS THAN 2 MILES IN LENGTH, USE A STATIONARY "LOOSE GRAVEL" SIGN AT THE BEGINNING CONSTRUCTION LIMIT FOLLOWED BY AN "UNMARKED PAVEMENT" SIGN MIDWAY THROUGH AND AN "END ROAD WORK" SIGN AT THE END CONSTRUCTION LIMIT.</p>	

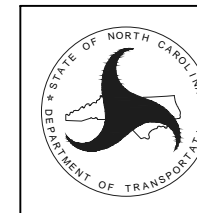
### STATIONARY SIGNING NOT REQUIRED FOR THE FOLLOWING -Y- LINE CONDITIONS:

- 1) LESS THAN 1000' OF RESURFACING ALONG -Y- LINE
- 2) SUBDIVISION ROADS
- 3) DEAD END ROADS

WHEN PAVING/CONSTRUCTION ACTIVITIES PROCEED ACROSS AN UNSIGNED -Y- LINE, PORTABLE ADVANCE WARNING SIGNS SHALL BE USED ALONG THE -Y- LINE AS SHOWN BELOW. REMOVE UPON COMPLETION OF WORK.



**NOTE:**  
IT IS THE CONTRACTOR'S RESPONSIBILITY TO ENSURE THE PROPER PLACEMENT AND LOCATION OF WORK ZONE SIGNING PER THE STANDARD DRAWING. NCDOT HAS THE RIGHT TO INSPECT THE PLANNED LOCATIONS AND REQUIRE ADJUSTMENT BY THE CONTRACTOR, AS NEEDED, OR AS DIRECTED BY THE ENGINEER.



REVISED - 12-13-2018  
NCDOT - DIVISION 6  
ADVANCE WARNING SIGNS FOR 2-LANE ROADWAY ASPHALT SURFACE TREATMENT

PROJECT NO.	SHEET NO.	TOTAL NO.
2024CPT.06.12.20242.1, et		

## SUMMARY OF QUANTITIES

PROJECT NO	COUNTY	MAP NO	ROUTE	DESCRIPTION	TYP NO	LANES	LANE TYPE	FINAL SURFACE TESTING REQUIRED	WARM MIX ASPHALT REQUIRED	LENGTH	WIDTH	BEGIN MP	END MP	1803500000-E	1836000000-E	1838000000-E			
														ASPHALT SURFACE TREATMENT, DOUBLE SEAL	ASPHALT SURFACE TREATMENT, TRIPLE SEAL	EMULSION FOR ASPHALT SURFACE TREATMENT			
														SY	SY	GAL			
2024CPT.06.12.20242.1	Columbus	1	SR-1400 / STONE COMPANY RD	FROM US 76 TO DEAD END	1	2		NO	NO	0.12	20	0	0.12	1,408		774			
<b>TOTAL FOR MAP NO. 1</b>														<b>0.12</b>		<b>1,408</b>	<b>774</b>		
2024CPT.06.12.20242.1	Columbus	2	SR-1414 / BRASWELL RD	FROM SR 1574 TO US 76	1	2		NO	NO	4.38	20	0	4.38	51,392		28,266			
<b>TOTAL FOR MAP NO. 2</b>														<b>4.38</b>		<b>51,392</b>	<b>28,266</b>		
2024CPT.06.12.20242.1	Columbus	3	SR-1455 / CASEY WILLIAMS RD	FROM US 76 TO DEAD END	1	2		NO	NO	0.14	20	0	0.14	1,643		904			
<b>TOTAL FOR MAP NO. 3</b>														<b>0.14</b>		<b>1,643</b>	<b>904</b>		
2024CPT.06.12.20242.1	Columbus	4	SR-1501 / DOODLE HILL RD/CARL MEARS RD/PORTER SWAMP RD	FROM SR 1566 TO US 76	1	2		NO	NO	2.5	20	1.47	3.97	29,333		16,133			
<b>TOTAL FOR MAP NO. 4</b>														<b>2.5</b>		<b>29,333</b>	<b>16,133</b>		
2024CPT.06.12.20242.1	Columbus	5	SR-1502 / BULLARD LN	FROM US 76 TO NC 242	1	2		NO	NO	0.97	20	0	0.97	11,381		6,260			
<b>TOTAL FOR MAP NO. 5</b>														<b>0.97</b>		<b>11,381</b>	<b>6,260</b>		
2024CPT.06.12.20242.1	Columbus	6	SR-1503 / HOMER NANCE RD	FROM SR 1504 TO SR 1501	1	2		NO	NO	2.09	20	0	2.09	24,523		13,488			
<b>TOTAL FOR MAP NO. 6</b>														<b>2.09</b>		<b>24,523</b>	<b>13,488</b>		
2024CPT.06.12.20242.1	Columbus	7	SR-1504 / PRINCESS ANN RD	FROM BGN MAINTENANCE TO US 76	1	2		NO	NO	8.14	20	0	8.14	95,509		52,530			
<b>TOTAL FOR MAP NO. 7</b>														<b>8.14</b>		<b>95,509</b>	<b>52,530</b>		
2024CPT.06.12.20242.1	Columbus	8	SR-1505 / WILLIAMSONS RD	FROM SR 1506 TO SR 1504	1	2		NO	NO	0.64	20	0	0.64	7,509		4,130			
<b>TOTAL FOR MAP NO. 8</b>														<b>0.64</b>		<b>7,509</b>	<b>4,130</b>		
2024CPT.06.12.20242.1	Columbus	9	SR-1506 / OLD BOARDMAN RD/MACEDONIA CH RD	FROM US 74 TO SR 1504	1	2		NO	NO	3.967	20	3.364	7.331	46,546		25,600			
<b>TOTAL FOR MAP NO. 9</b>														<b>3.967</b>		<b>46,546</b>	<b>25,600</b>		
2024CPT.06.12.20242.1	Columbus	10	SR-1512 / BUD STEPHENS RD	FROM SR 1504 TO NC 242	1	2		NO	NO	3.29	18	0	3.29	34,742		19,108			
<b>TOTAL FOR MAP NO. 10</b>														<b>3.29</b>		<b>34,742</b>	<b>19,108</b>		
2024CPT.06.12.20242.1	Columbus	11	SR-1524 / GRIFFIN RD	FROM SR 1504 TO SR 1414	1	2		NO	NO	1.23	18	0	1.23	12,989		7,144			
<b>TOTAL FOR MAP NO. 11</b>														<b>1.23</b>		<b>12,989</b>	<b>7,144</b>		
2024CPT.06.12.20242.1	Columbus	12	SR-1525 / PAUL BARNES RD	FROM SR 1504 TO SR 1414	1	2		NO	NO	1.94	20	0	1.94	22,763		12,520			
<b>TOTAL FOR MAP NO. 12</b>														<b>1.94</b>		<b>22,763</b>	<b>12,520</b>		
2024CPT.06.12.20242.1	Columbus	13	SR-1527 / YATES RD	FROM SR 1574 TO SR 1528	1	2		NO	NO	2.08	20	0	2.08	24,405		13,423			
<b>TOTAL FOR MAP NO. 13</b>														<b>2.08</b>		<b>24,405</b>	<b>13,423</b>		
2024CPT.06.12.20242.1	Columbus	14	SR-1528 / BIRD CAGE RD	FROM US 76 TO NC 410	1	2		NO	NO	2.3	20	0	2.3	26,987		14,843			
<b>TOTAL FOR MAP NO. 14</b>														<b>2.3</b>		<b>26,987</b>	<b>14,843</b>		
2024CPT.06.12.20242.1	Columbus	15	SR-1562 / TOMMIE WOOTEN RD	FROM DEAD END TO US 76	1	2		NO	NO	0.54	20	0	0.54	6,336		3,485			
<b>TOTAL FOR MAP NO. 15</b>														<b>0.54</b>		<b>6,336</b>	<b>3,485</b>		
2024CPT.06.12.20242.1	Columbus	16	SR-1573 / GILLIARD RD	FROM SR 1528 TO DEAD END	1	2		NO	NO	0.31	20	0	0.31	3,637		2,000			
<b>TOTAL FOR MAP NO. 16</b>														<b>0.31</b>		<b>3,637</b>	<b>2,000</b>		
2024CPT.06.12.20242.1	Columbus	17	SR-1574 / OLD 74	FROM US 74 TO US 76	1	2		NO	NO	4.35	19	6.65	11	48,488		26,668			
<b>TOTAL FOR MAP NO. 17</b>														<b>4.35</b>		<b>48,488</b>	<b>26,668</b>		
2024CPT.06.12.20242.1	Columbus	18	SR-1578 / STRAWBERRY LN	FROM SR 1574 TO END MAINT	1	2		NO	NO	0.1	20	0	0.1	1,173		645			
<b>TOTAL FOR MAP NO. 18</b>														<b>0.1</b>		<b>1,173</b>	<b>645</b>		
<b>TOTAL FOR PROJ NO. 2024CPT.06.12.20242.1</b>														<b>39.09</b>		<b>450,764</b>	<b>247,921</b>		
2024CPT.06.12.20242.2	Columbus	19	SR-1566 / CARL MEARS RD	FROM SR 1500 TO SR 1501	2	2		NO	NO	1.61	20	0	1.61		18,891	10,862			
<b>TOTAL FOR MAP NO. 19</b>														<b>1.61</b>			<b>18,891</b>	<b>10,862</b>	
2024CPT.06.12.20242.2	Columbus	20	SR-1500 / ICE PLANT RD/CARL MEARS RD	FROM US 76 TO US 76	2	2		NO	NO	2.89	20	0	2.89		33,909	19,498			
<b>TOTAL FOR MAP NO. 20</b>														<b>2.89</b>			<b>33,909</b>	<b>19,498</b>	
<b>TOTAL FOR PROJ NO. 2024CPT.06.12.20242.2</b>														<b>4.5</b>			<b>52,800</b>	<b>30,360</b>	
<b>GRAND TOTAL</b>														<b>43.59</b>			<b>450,764</b>	<b>52,800</b>	<b>278,281</b>

PROJECT NO.	SHEET NO.	TOTAL NO.
4CPT.06.12.20242.1, 2024CPT.06.12.2024		

## THERMOPLASTIC AND PAINT QUANTITIES

PROJECT NO	COUNTY	MAP NO	ROUTE	DESCRIPTION	TYP NO	LANES	LANE TYPE	LENGTH	WIDTH	BEGIN MP	END MP	4413000000-E	4457000000-N
								MI	FT			WORK ZONE ADVANCE/GENERAL WARNING SIGNING	TEMPORARY TRAFFIC CONTROL
												SF	LS
2024CPT.06.12.20242.1	Columbus	1	SR-1400 / STONE COMPANY RD	FROM US 76 TO DEAD END	1	2		0.12	20	0	0.12	112	1.00
<b>TOTAL FOR MAP NO. 1</b>								<b>0.12</b>				<b>112</b>	<b>1</b>
2024CPT.06.12.20242.1	Columbus	2	SR-1414 / BRASWELL RD	FROM SR 1574 TO US 76	1	2		4.38	20	0	4.38	301	
<b>TOTAL FOR MAP NO. 2</b>								<b>4.38</b>				<b>301</b>	
2024CPT.06.12.20242.1	Columbus	3	SR-1455 / CASEY WILLIAMS RD	FROM US 76 TO DEAD END	1	2		0.14	20	0	0.14	112	
<b>TOTAL FOR MAP NO. 3</b>								<b>0.14</b>				<b>112</b>	
2024CPT.06.12.20242.1	Columbus	4	SR-1501 / DOODLE HILL RD/CARL MEARS RD/PORTER SWAMP RD	FROM SR 1566 TO US 76	1	2		2.5	20	1.47	3.97	196	
<b>TOTAL FOR MAP NO. 4</b>								<b>2.5</b>				<b>196</b>	
2024CPT.06.12.20242.1	Columbus	5	SR-1502 / BULLARD LN	FROM US 76 TO NC 242	1	2		0.97	20	0	0.97	112	
<b>TOTAL FOR MAP NO. 5</b>								<b>0.97</b>				<b>112</b>	
2024CPT.06.12.20242.1	Columbus	6	SR-1503 / HOMER NANCE RD	FROM SR 1504 TO SR 1501	1	2		2.09	20	0	2.09	173	
<b>TOTAL FOR MAP NO. 6</b>								<b>2.09</b>				<b>173</b>	
2024CPT.06.12.20242.1	Columbus	7	SR-1504 / PRINCESS ANN RD	FROM BGN MAINTENANCE TO US 76	1	2		8.14	20	0	8.14	512	
<b>TOTAL FOR MAP NO. 7</b>								<b>8.14</b>				<b>512</b>	
2024CPT.06.12.20242.1	Columbus	8	SR-1505 / WILLIAMSONS RD	FROM SR 1506 TO SR 1504	1	2		0.64	20	0	0.64	112	
<b>TOTAL FOR MAP NO. 8</b>								<b>0.64</b>				<b>112</b>	
2024CPT.06.12.20242.1	Columbus	9	SR-1506 / OLD BOARDMAN RD/MACEDONIA CH RD	FROM US 74 TO SR 1504	1	2		3.967	20	3.364	7.331	278	
<b>TOTAL FOR MAP NO. 9</b>								<b>3.967</b>				<b>278</b>	
2024CPT.06.12.20242.1	Columbus	10	SR-1512 / BUD STEPHENS RD	FROM SR 1504 TO NC 242	1	2		3.29	18	0	3.29	240	
<b>TOTAL FOR MAP NO. 10</b>								<b>3.29</b>				<b>240</b>	
2024CPT.06.12.20242.1	Columbus	11	SR-1524 / GRIFFIN RD	FROM SR 1504 TO SR 1414	1	2		1.23	18	0	1.23	112	
<b>TOTAL FOR MAP NO. 11</b>								<b>1.23</b>				<b>112</b>	
2024CPT.06.12.20242.1	Columbus	12	SR-1525 / PAUL BARNES RD	FROM SR 1504 TO SR 1414	1	2		1.94	20	0	1.94	112	
<b>TOTAL FOR MAP NO. 12</b>								<b>1.94</b>				<b>112</b>	
2024CPT.06.12.20242.1	Columbus	13	SR-1527 / YATES RD	FROM SR 1574 TO SR 1528	1	2		2.08	20	0	2.08	172	
<b>TOTAL FOR MAP NO. 13</b>								<b>2.08</b>				<b>172</b>	
2024CPT.06.12.20242.1	Columbus	14	SR-1528 / BIRD CAGE RD	FROM US 76 TO NC 410	1	2		2.3	20	0	2.3	185	
<b>TOTAL FOR MAP NO. 14</b>								<b>2.3</b>				<b>185</b>	
2024CPT.06.12.20242.1	Columbus	15	SR-1562 / TOMMIE WOOTEN RD	FROM DEAD END TO US 76	1	2		0.54	20	0	0.54	112	
<b>TOTAL FOR MAP NO. 15</b>								<b>0.54</b>				<b>112</b>	
2024CPT.06.12.20242.1	Columbus	16	SR-1573 / GILLIARD RD	FROM SR 1528 TO DEAD END	1	2		0.31	20	0	0.31	112	
<b>TOTAL FOR MAP NO. 16</b>								<b>0.31</b>				<b>112</b>	
2024CPT.06.12.20242.1	Columbus	17	SR-1574 / OLD 74	FROM US 74 TO US 76	1	2		4.35	19	6.65	11	300	
<b>TOTAL FOR MAP NO. 17</b>								<b>4.35</b>				<b>300</b>	
2024CPT.06.12.20242.1	Columbus	18	SR-1578 / STRAWBERRY LN	FROM SR 1574 TO END MAINT	1	2		0.1	20	0	0.1	112	
<b>TOTAL FOR MAP NO. 18</b>								<b>0.1</b>				<b>112</b>	
<b>TOTAL FOR PROJ NO. 2024CPT.06.12.20242.1</b>								<b>39.09</b>				<b>3,365</b>	<b>1.000</b>
2024CPT.06.12.20242.2	Columbus	19	SR-1566 / CARL MEARS RD	FROM SR 1500 TO SR 1501	2	2		1.61	20	0	1.61	112	
<b>TOTAL FOR MAP NO. 19</b>								<b>1.61</b>				<b>112</b>	
2024CPT.06.12.20242.2	Columbus	20	SR-1500 / ICE PLANT RD/CARL MEARS RD	FROM US 76 TO US 76	2	2		2.89	20	0	2.89	218	
<b>TOTAL FOR MAP NO. 20</b>								<b>2.89</b>				<b>218</b>	
<b>TOTAL FOR PROJ NO. 2024CPT.06.12.20242.2</b>								<b>4.5</b>				<b>330</b>	
<b>GRAND TOTAL</b>								<b>43.59</b>				<b>3,695</b>	<b>1.000</b>